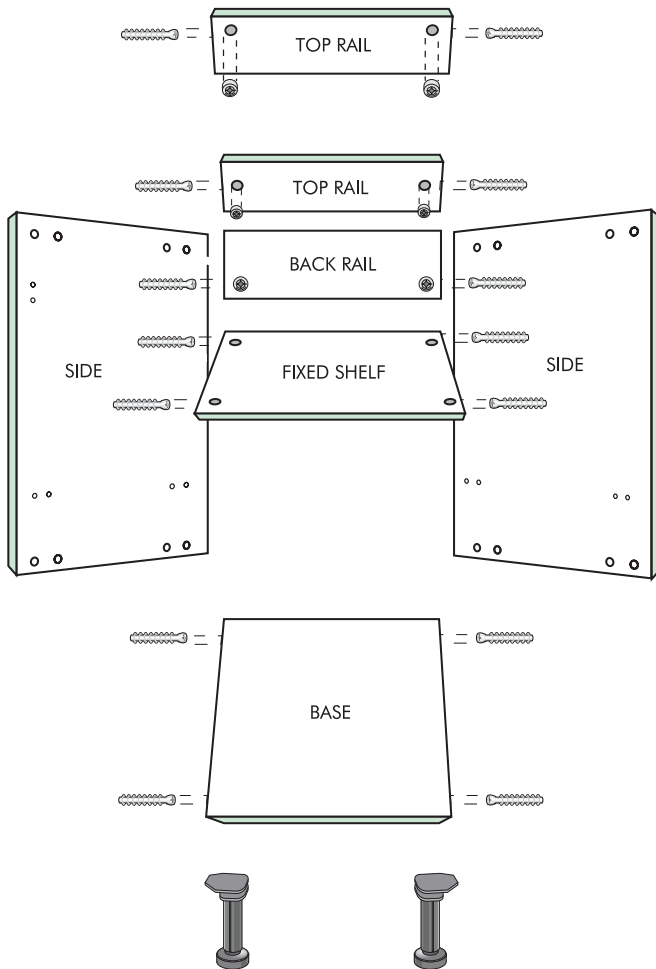
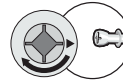


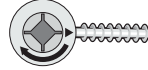
1 ALL COMPONENTS



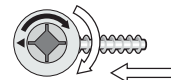
2 USING THE CAM SYSTEM



INSERT THE CAM SCREWS INTO THE SIDES SO THAT IT PROTRUDES ENOUGH FOR THE HEAD OF THE SCREW TO BE ROUGHLY CENTRED IN THE CAM HOLES IN THE BASE

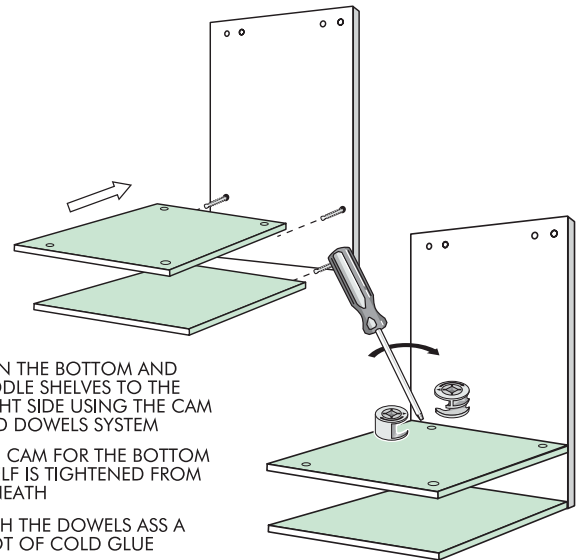


START WITH THE TRIANGLE POINTING TO THE SIDE PIECE



TURN A HALF ROTATION SO THAT THE TRIANGLE POINTS TO THE INSIDE OF THE CABINET

3 JOIN THE BOTTOM AND MIDDLE SHELVES TO THE RIGHT SIDE

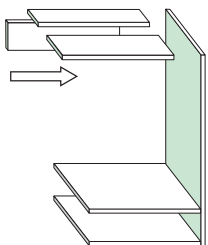


JOIN THE BOTTOM AND MIDDLE SHELVES TO THE RIGHT SIDE USING THE CAM AND DOWELS SYSTEM

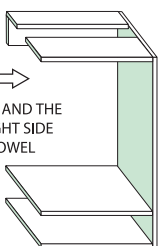
THE CAM FOR THE BOTTOM SHELF IS TIGHTENED FROM BENEATH

WITH THE DOWELS ASS A SPOT OF COLD GLUE

4 JOIN THE TOP AND BACK PANELS

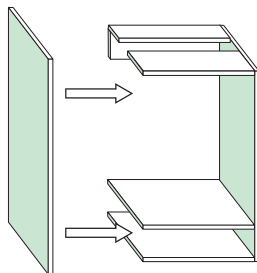


JOIN THE 2 TOP PANELS AND THE BACK PANEL TO THE RIGHT SIDE USING THE CAM AND DOWEL SYSTEM



5 FIX THE OTHER SIDE

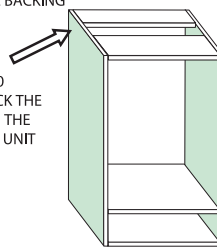
FIX THE REMAINING SIDE INTO PLACE



6

NB USING 8 X 30 SCREWS SECURE THE BACKING

USING 8 X 30 SCREWS LOCK THE CAMS FROM THE SIDE OF THE UNIT



7 FLIP IT OVER AND ADD LEGS SECURE LEGS AND FLIP IT OVER AGAIN

PLACE THE LEGS 16MM AWAY FROM THE EDGE OF THE CABINET WITH THE TAB FACING OUT AND SCREW DOWN

ADJUST THE HEIGHT OF THE LEGS AND TILT IT RIGHT WAY UP AGAIN

NOW YOUR CABINET IS FINISHED AND CAN BE ALIGNED WITH OTHERS TO CREATE A BIGGER CABINET

A COUNTERTOP CAN BE ADDED AS YOU NEED

