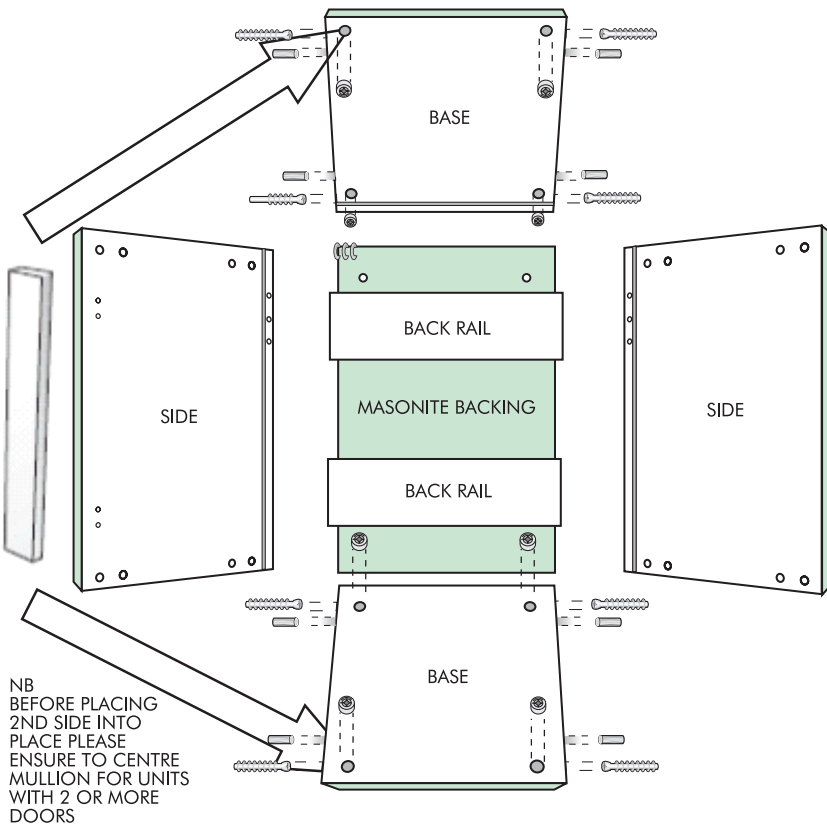
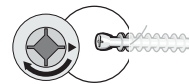


1 ALL COMPONENTS



NB
BEFORE PLACING
2ND SIDE INTO
PLACE PLEASE
ENSURE TO CENTRE
MULLION FOR UNITS
WITH 2 OR MORE
DOORS

2 START WITH BOTTOM AND RIGHT SIDE



INSERT THE CAM SCREWS INTO THE SIDES SO THAT IT PROTRUDES ENOUGH FOR THE HEAD OF THE SCREW TO BE ROUGHLY CENTRED IN THE CAM HOLES IN THE BASE

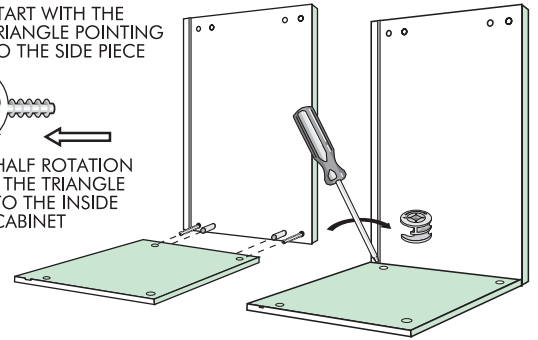


INSERT THE DOWELS IN THE PRE-DRILLED HOLES AFTER APPLYING A LITTLE 'COLD GLUE' INTO THE DOWEL HOLES

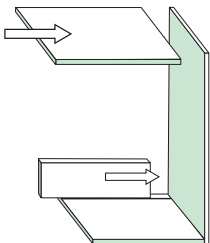
START WITH THE TRIANGLE POINTING TO THE SIDE PIECE



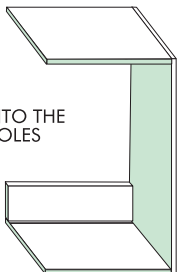
TURN A HALF ROTATION SO THAT THE TRIANGLE POINTS TO THE INSIDE OF THE CABINET



3 NOW JOIN TOP PANEL AND BACK RAIL TO THE RIGHT SIDE

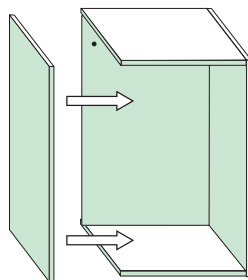


THE CAM AND DOWELS FIT INTO THE PRE-DRILLED HOLES



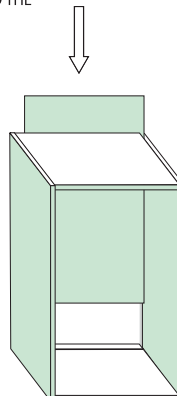
4 FIX THE OTHER SIDE

FIX THE REMAINING SIDE INTO PLACE



5 SLIDE IN THE BCKING BOARD

SLIDE THE BACKING BOARD INTO THE GROOVE



6 HANG THE CUPBOARD ON THE WALL

NOW YOU CAN ADD ADDITIONAL WALL UNITS AND DOORS

