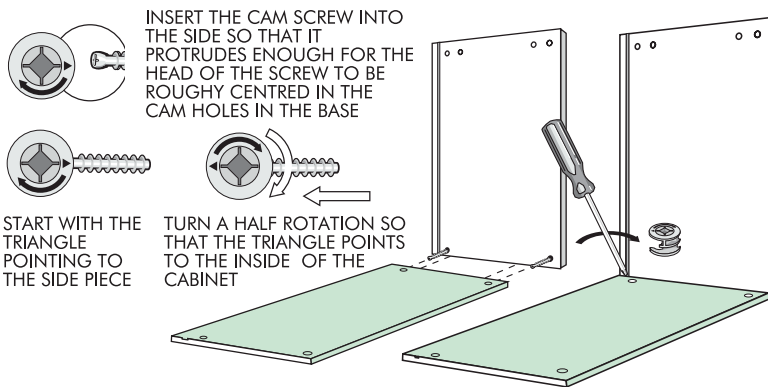
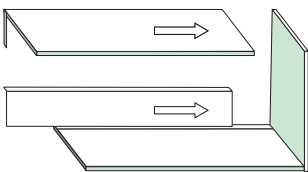


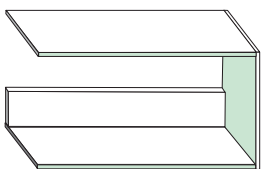
1 START WITH BOTTOM AND RIGHT SIDE



2 NOW JOIN TOP PANEL AND THE BACK RAIL TO THE RIGHT SIDE

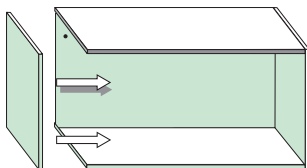


THE BACK RAIL WILL FIT BEHIND THE BACKING BOARD. THE CAM AND DOWELS FIT INTO THE PRE-DRILLED HOLES



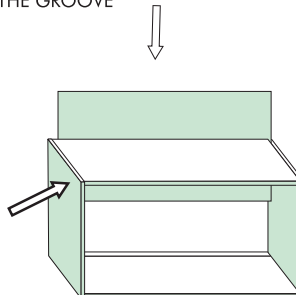
3 FIX THE OTHER SIDE

FIX THE REMAINING SIDE INTO PLACE



5 SLIDE IN THE BACKING BOARD

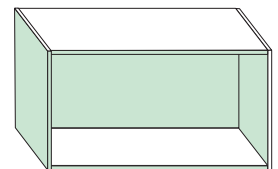
SLIDE THE BCKING BOARD INTO THE GROOVE



NB USING 8 X 30 SCREWS SECURE THE BACKING

USING 8 X 30 SCREWS LOCK THE CAMS FROM THE SIDE OF THE UNIT

5 HANG THE CUPBOARD ON THE WALL



NOW YOU CAN ADD ADDITIONAL UNITS

